

# Younger Dryas deglaciation of Scotland driven by warming summers

Gordon R. M. Bromley<sup>a,1</sup>, Aaron E. Putnam<sup>a,b</sup>, Kurt M. Rademaker<sup>a</sup>, Thomas V. Lowell<sup>c</sup>, Joerg M. Schaefer<sup>b</sup>, Brenda Hall<sup>a</sup>, Gisela Winckler<sup>b</sup>, Sean D. Birkel<sup>a</sup>, and Harold W. Borns<sup>a</sup>

<sup>a</sup>Climate Change Institute and School of Earth and Climate Sciences, University of Maine, Orono, ME 04469; <sup>b</sup>Lamont–Doherty Earth Observatory, Palisades, NY 10960; and <sup>c</sup>Department of Geology, University of Cincinnati, Cincinnati, OH 45221-0013

Edited\* by Wallace S. Broecker, Columbia University, Palisades, NY, and approved March 7, 2014 (received for review November 10, 2013)

**The Younger Dryas Stadial (YDS; ~12,900–11,600 y ago) in the Northern Hemisphere is classically defined by abrupt cooling and renewed glaciation during the last glacial–interglacial transition. Although this event involved a global reorganization of atmospheric and oceanic circulation [Denton GH, Alley RB, Comer GC, Broecker WS (2005) *Quat Sci Rev* 24:1159–1182], the magnitude, seasonality, and geographical footprint of YDS cooling remain unresolved and pose a challenge to our understanding of abrupt climate change. Here, we present a deglacial chronology from Scotland, immediately downwind of the North Atlantic Ocean, indicating that the Scottish ice cap disintegrated during the first half of the YDS. We suggest that stratification of the North Atlantic Ocean resulted in amplified seasonality that, paradoxically, stimulated a severe wintertime climate while promoting warming summers through solar heating of the mixed layer. This latter process drove deglaciation of downwind landmasses to completion well before the end of the YDS.**

**D**etermining the causes of abrupt climate change remains an outstanding question of paleoclimatology, the answer to which involves resolving the timing, magnitude, and geographic extent of past abrupt climate events. The Younger Dryas Stadial (YDS) is widely considered the canonical example of abrupt climate change. Mean annual temperatures in the circum-North Atlantic returned to near-full glacial values for ~1,300 y before rising 5–10 °C within a few years to decades (1, 2). This dramatic cooling has been correlated with renewed glaciation throughout the Northern Hemisphere, particularly in the circum-North Atlantic. In Europe, for instance, the YDS has been assumed to be synonymous with the most extensive glacier advances of the late glacial (3–7). The extreme temperatures of the stadial have been attributed to stratification of the North Atlantic water column and shutdown of meridional overturning circulation (MOC) (8), in addition to the spread of wintertime sea ice and shifting westerly airflow (9). However, although the North Atlantic remains a key player in hypotheses for the YDS, recent developments are refining our view of the event’s full manifestation. Mean annual temperatures recorded in the Greenland ice cores were skewed toward strong wintertime cooling, due to the effect of expanded North Atlantic winter sea ice (10). Conversely, summer atmospheric temperatures, which dominate glacier mass balance, probably were milder than previously thought (10, 11–13). Thus the North Atlantic may have exhibited the hallmarks of a “continental climate” during the YDS, which, if true, has important implications regarding the role of highly seasonal North Atlantic stadial events in facilitating, rather than stalling, recession of adjacent ice masses. We address this problem by presenting a chronology of glacial activity immediately downwind of the North Atlantic in Scotland.

Glaciers are sensitive to small changes in climate, particularly temperature and precipitation. In western Europe, where climate is dominated by the ameliorating effect of the North Atlantic Current, glaciers are highly responsive to upwind sea-surface temperatures (*SI Text*), and past glacier behavior would have been dominated by North Atlantic sea-surface conditions.

Thus the Scottish glacial record is ideal for reconstructing late glacial variability in North Atlantic temperature (Fig. 1). The last glacier resurgence in Scotland—the “Loch Lomond Advance” (LLA)—culminated in a ~9,500-km<sup>2</sup> ice cap centered over Rannoch Moor (Fig. 24) and surrounded by smaller ice fields and cirque glaciers. The ice cap was drained via calving tidewater glaciers along its western margin and land-terminating glaciers along its eastern margin. Well-preserved moraines indicate that subsequent deglaciation was characterized by progressive, active retreat rather than rapid downwasting (16, 17). In contrast to the wealth of information constraining the physical characteristics of the LLA, few data exist resolving the precise age of the event, and there remains considerable uncertainty as to when the advance began or when glaciers reached their maximum extent (18–20). Nevertheless, the LLA traditionally is correlated with the YDS and assumed to have culminated near the end of the stadial (5).

To derive an independent chronology of glacier recession downwind of the North Atlantic, we mapped and dated glacial deposits in the western sector of Rannoch Moor (56.636°N, 4.7732°W), located at the former center of the LLA ice cap, to reconstruct the final stages of ice-cap retreat. End moraines of up to 5 m relief define the northward recession of an active ice front across the moor (~300 m elevation), whereas chaotic mounds located on broad uplands (~400 m elevation) near the moor’s center indicate final stagnation of remnant ice (Fig. 2B). Previous investigations into the deglacial chronology of the site invoked ice-free conditions at Rannoch Moor—and consequently throughout Scotland—as early as 12,400 ± 330 calendar years (cal yr) [sample SRR-1074 (21) (*Dataset S1*)] and no later than

## Significance

**Resolving the full manifestation of past abrupt climate change is key to understanding the processes driving and propagating these events. As a principal component of global heat transport, the North Atlantic Ocean also is susceptible to rapid disruptions of meridional overturning circulation and thus widely invoked as a cause of abrupt climate variability in the Northern Hemisphere. We assess the impact of one such North Atlantic cold event—the Younger Dryas Stadial—on an adjacent ice mass and show that, rather than instigating a return to glacial conditions, this abrupt climate event was characterized by deglaciation. We suggest this pattern indicates summertime warming during the Younger Dryas, potentially as a function of enhanced seasonality in the North Atlantic.**

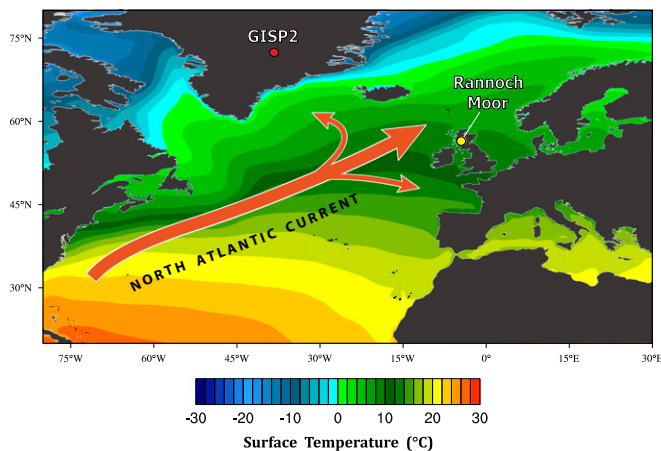
Author contributions: G.R.M.B., A.E.P., and H.W.B. designed research; G.R.M.B., A.E.P., and K.M.R. performed research; S.D.B. provided data; G.R.M.B., A.E.P., K.M.R., T.V.L., and B.H. analyzed data; and G.R.M.B., A.E.P., T.V.L., J.M.S., B.H., G.W., and S.D.B. wrote the paper.

The authors declare no conflict of interest.

\*This Direct Submission article had a prearranged editor.

<sup>1</sup>To whom correspondence should be addressed. E-mail: gordon.r.bromley1@maine.edu.

This article contains supporting information online at [www.pnas.org/lookup/suppl/doi:10.1073/pnas.1321122111/-DCSupplemental](http://www.pnas.org/lookup/suppl/doi:10.1073/pnas.1321122111/-DCSupplemental).



**Fig. 1.** Surface temperature and heat transport in the North Atlantic Ocean. The relatively mild European climate is sustained by warm sea-surface temperatures and prevailing southwesterly airflow in the North Atlantic Ocean (NAO), with this ameliorating effect being strongest in maritime regions such as Scotland. Mean annual temperature (1979 to present) at 2 m above surface (image obtained using University of Maine Climate Reanalyzer, [www.cci-reanalyzer.org](http://www.cci-reanalyzer.org)). Locations of Rannoch Moor and the GISP2 ice core are indicated.

12,150 ± 300 cal yr [sample BIRM-858 (21) (Dataset S1)]. This scenario conflicts with the canonical view that glaciers in Scotland collapsed in response to rapid warming at the end of the YDS (as reviewed in ref. 20), suggesting instead that deglaciation was underway early in the stadial.

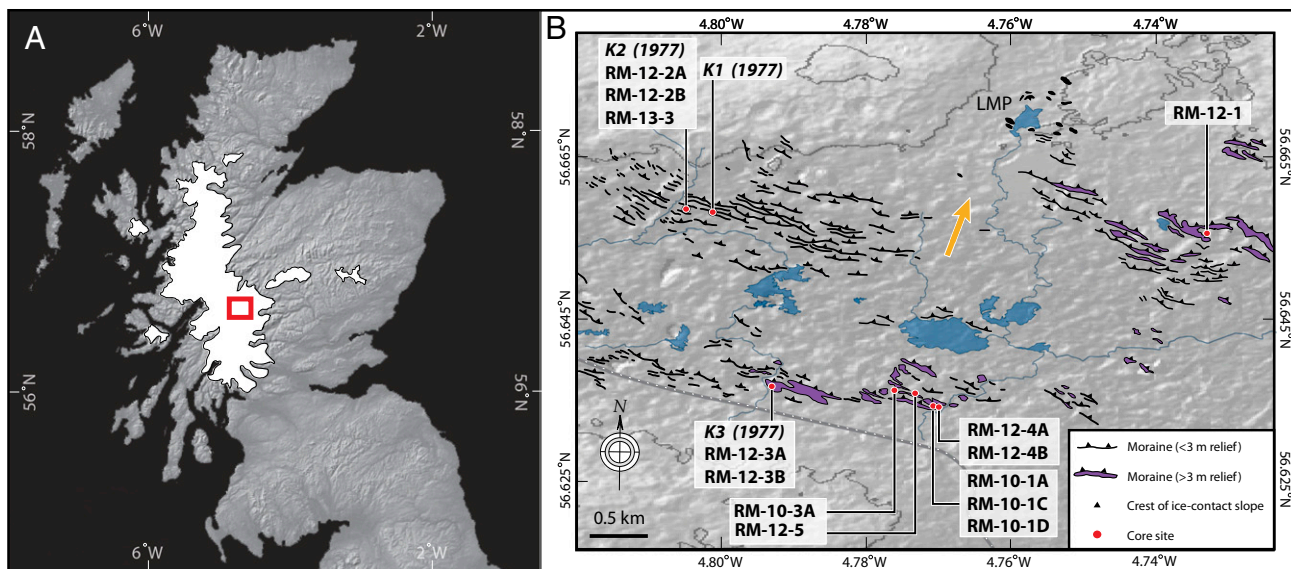
To address this discrepancy, we collected 13 sediment cores from moraine-dammed bogs on Rannoch Moor (Fig. 2B and Figs. S1–S3) and extracted organic material for <sup>14</sup>C dating from sediments immediately overlying the LLA till. Our independent radiocarbon-based chronology is underpinned by 20 basal ages derived from these water-lain postglacial sediments. Samples consisted primarily of terrestrial plant macrofossils (Materials and Methods and Fig. S4) that most likely were dislodged from

adjacent land surfaces (e.g., by slope processes, wind, rain, etc.) and incorporated into nearby drainage, before being deposited along with reworked minerogenic sediments in topographic basins. Thus, terrestrial plant remains in these earliest postglacial deposits typically do not reflect growth position. There is no evidence (e.g., till, disturbance of sediments) in our cores for ice overriding subsequent to deposition of the LLA till. Moreover, the near-perfect preservation of the plant remains (Fig. S4) argues against these macrofossils having been glacially reworked from the pre-LLA landscape. Thus the earliest organics in our cores represent the onset of postglacial plant colonization of Rannoch Moor and provide a minimum limit on the age of complete deglaciation of the LLA ice cap.

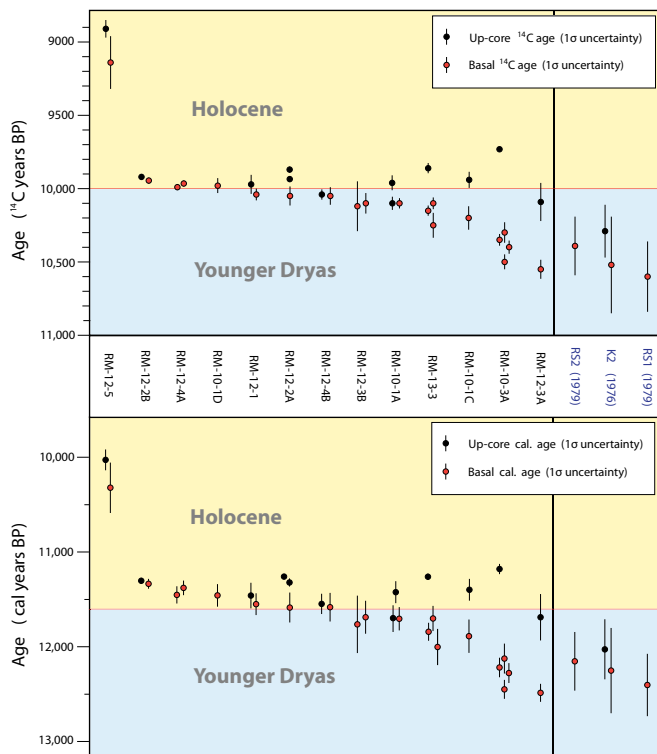
## Results and Discussion

Radiocarbon ages are shown in Fig. 3 and are given in Dataset S1. Ages from the lowermost macrofossils in each core range from 9,140 ± 180 to 10,550 ± 65 <sup>14</sup>C y, corresponding to 10,320 ± 270 to 12,480 ± 100 cal yr (Dataset S1). This nonnormal distribution is characteristic of minimum-limiting datasets and confirms that the basal ages do not represent a single event (deglaciation) but a process: the progressive postglacial colonization by plants of Rannoch Moor. Initial sparse vegetation is succeeded over time by more extensive and continuous cover, a nonuniform process which may have been complicated by the presence of buried ice (SI Text). Thus the distribution of basal dates will be skewed toward younger ages, whereas those more closely representing the onset of plant colonization will be relatively few (SI Text). For this reason, because we want to examine the very first occurrence of plant growth on Rannoch Moor—and thereby provide a close minimum-limiting age for deglaciation—we focus on the oldest basal dates.

When did postglacial plant colonization of Rannoch Moor begin? Here, we use several statistical approaches to establish the basal radiocarbon age(s) most representative of that event. First, following geologic convention (e.g., 22), we take the single oldest age in our dataset as the closest constraint on deglaciation. Sample OS-99685 (10,550 ± 65 <sup>14</sup>C y; Dataset S1), from the basal section of core RM-12-3A, gives a weighted-mean calibrated age



**Fig. 2.** Extent of the LLA ice cap in Scotland and glacial geomorphology of western Rannoch Moor. (A) Maximum extent of the ~9,500 km<sup>2</sup> LLA ice cap and larger satellite ice masses, indicating the central location of Rannoch Moor. Nunataks are not shown. (B) Glacial-geomorphic map of western Rannoch Moor. Distinct moraine ridges mark the northward active retreat of the glacier margin (indicated by arrow) across this sector of the moor, whereas chaotic moraines near Lochan Meall a' Phuill (LMP) mark final stagnation of ice. Core sites are shown, including those (K1–K3) of previous investigations (14, 15).



**Fig. 3.** Relative distribution of Rannoch Moor radiocarbon dates. Ages are shown for all thirteen cores (this study), as well as the relative distributions of previously published ages (19, 21, 22). Basal  $^{14}\text{C}$  ages are highlighted in red. The  $^{14}\text{C}$  ages from higher stratigraphic levels are shown in black.

of  $12,480 \pm 100$  cal yr, whereas the earliest probable (defined here as the 90% confidence interval) age of that sample is 12,580 cal yr (Table 1, Fig. 4A, and Fig. S5). However, this widely used approach raises the possibility of basing paleoclimatic interpretations on a potentially “old” outlier sample. A second and more conservative method is to use the oldest replicable dates as a minimum age for deglaciation. Using  $\chi^2$  statistics, we identified the oldest replicable basal  $^{14}\text{C}$  ages in our dataset as samples OS-99977, OS-99978, OS-89841, and OS-89842, all from the basal 4 cm of core RM-10-3A (SI Text, Fig. S1, and Dataset S1). This statistically indistinguishable grouping [ $\chi^2 = (3, n = 4) = 7.6$ ,  $P = 7.8$ ] has an error-weighted mean calibrated age of  $12,262 \pm 85$  cal yr, which we take as a conservative date for the onset of plant colonization (Fig. 4B and Fig. S6). However, at 90% confidence, the earliest probable age for the first plants on Rannoch Moor based on these ages is 12,493 cal yr (Fig. S6).

A third and broader-scale approach assesses the cumulative probability of all eighteen basal ages. Because the nonnormal distribution of this dataset precludes taking the mean as a close minimum age for plant colonization (SI Text), we use the 90% confidence interval to identify the earliest probable age represented

by this dataset as 12,371 cal yr (Table 1 and Fig. S7). Furthermore, although 40% of the cumulative-probability curve lies  $<11.6$  ka, this distribution reflects the inclusion of basal ages that are considerably younger than the onset of plant growth. Thus we argue that for this analysis of all basal data the 90% value constrains most closely the age of deglaciation.

Although there are several ways to establish the most representative age for deglaciation using a minimum-limiting dataset such as ours, we note that, regardless of approach, the outcome does not change our conclusions. As shown in Table 1, the difference between the earliest probable age (12,580 cal yr) and our most conservative estimate ( $12,262 \pm 85$  cal yr) is  $<400$  y, reflecting the consistency among our oldest basal ages. Furthermore, because these ages represent the first vegetation to colonize Rannoch Moor following deglaciation, they constitute a minimum-limiting age for final disappearance of the LLA ice cap. Our chronology indicates that deglaciation of Rannoch Moor was complete as early as  $\sim 12,580$  cal yr, but no later than  $\sim 12,200$  cal yr (Fig. 4). This interpretation is reinforced by the tight agreement between our data and existing minimum-limiting ages from Rannoch Moor (14, 15, 21) (Fig. 3 and Dataset S1).

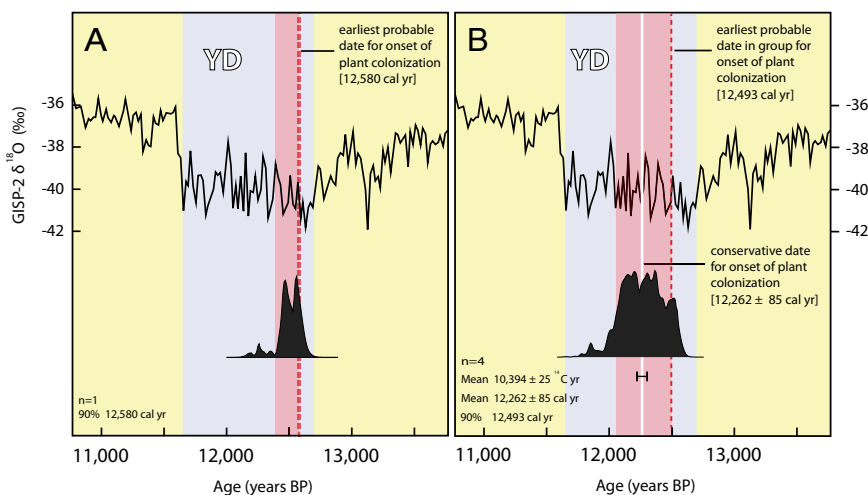
Both “earliest” and “conservative” scenarios indicate that Rannoch Moor was deglaciated by mid-YDS time (Fig. 4) and therefore that the extensive  $\sim 9,500\text{-km}^2$  LLA ice cap was gone from the landscape at least 500 y before the end of the stadial. These findings conflict with the prevailing view that glaciers in Scotland advanced and maintained maximum positions throughout much of the YDS, posing the question: What drove deglaciation during a period of apparently severe North Atlantic cold? Furthermore, if the YDS was characterized by deglaciation, then when did the LLA itself occur?

We consider two possible resolutions to the paradox of deglaciation during the YDS. First, declining precipitation over Scotland due to gradually increasing North Atlantic sea-ice extent has been invoked to explain the reported shrinkage of glaciers in the latter half of the YDS (18). However, this course of events conflicts with recent data depicting rapid, widespread imposition of winter sea-ice cover at the onset of the YDS (9), rather than progressive expansion throughout the stadial. Furthermore, considering the gradual active retreat of LLA glaciers indicated by the geomorphic record, our chronology suggests that deglaciation began considerably earlier than the mid-YDS, when precipitation reportedly began to decline (18). Finally, our cores contain lacustrine sediments deposited throughout the latter part of the YDS, indicating that the water table was not substantially different from that of today. Indeed, some reconstructions suggest enhanced YDS precipitation in Scotland (24, 25), which is inconsistent with the explanation that precipitation starvation drove deglaciation (26).

We prefer an alternative scenario in which glacier recession was driven by summertime warming and snowline rise. We suggest that amplified seasonality, driven by greatly expanded winter sea ice, resulted in a relatively continental YDS climate for western Europe, both in winter and in summer. Although sea-ice formation prevented ocean–atmosphere heat transfer during the

**Table 1.** Radiocarbon and calibrated age determinations for the minimum deglaciation-age scenarios

Scenario	Age ( $^{14}\text{C}$ y)	Mean calibrated age (cal yr)	Earliest probable
			age at 90% confidence (cal yr)
Single oldest age: OS-99685	$10,550 \pm 65$	$12,481 \pm 95$	12,580
Oldest replicable ages ( $n = 4$ ): OS-99978, OS-89842, OS-89841, OS-99977	$10,394 \pm 25$	$12,262 \pm 85$	12,493
All basal ages ( $n = 20$ )	—	—	12,371



**Fig. 4.** Minimum-limiting ages for the final collapse of the LLA ice cap compared with the Greenland temperature record. (A) Sum-probability curve for the single oldest basal age, shown in black, with 90% confidence interval (pink shading) and maximum probable age for plant colonization (red dashed line). This age suggests Rannoch Moor was ice-free by 12,580 cal yr. (B) Sum-probability curve for the oldest replicable basal ages, showing both the oldest probable age for plant colonization and the error-weighted mean (white line) with  $2\sigma$  uncertainty (black bar). This calibrated mean age represents our conservative estimate for the final collapse of the LLA ice cap and indicates that Rannoch Moor was deglaciated no later than  $\sim 12,200$  cal yr. For comparison, the GISP2  $\delta^{18}\text{O}$  record (23) and YDS (blue shading) are shown.

winter months (10), summertime melting of sea ice would have imposed an extensive freshwater cap on the ocean surface (27), resulting in a buoyancy-stratified North Atlantic. In the absence of deep vertical mixing, summertime heating would be concentrated at the ocean surface, thereby increasing both North Atlantic summer sea-surface temperatures (SSTs) and downwind air temperatures. Such a scenario is analogous to modern conditions in the Sea of Okhotsk (28) and the North Pacific Ocean (29), where buoyancy stratification maintains considerable seasonal contrasts in SSTs. Indeed, Haug et al. (30) reported higher summer SSTs in the North Pacific following the onset of stratification than previously under destratified conditions, despite the growing presence of northern ice sheets and an overall reduction in annual SST. A similar pattern is evident in a new SST record from the northeastern North Atlantic, which shows higher summer temperatures during stadial periods (e.g., Heinrich stadials 1 and 2) than during interstadials on account of amplified seasonality (30).

The effects of stratification-driven summertime warming may have been exacerbated by amplified seasonal shifts of the boreal westerlies. Although the jet stream likely was stronger and more zonal across the North Atlantic during YDS winters on account of expanded sea-ice (9), retreat of the sea-ice edge during spring and summer to a position north of Norway (31) could have facilitated a more meridional trajectory of the summertime jet, resulting in incursions of warmer subtropical air masses to Scotland. Additionally, YDS warming of the midlatitude North Atlantic that arose as a consequence of curtailed MOC (32) would have enhanced warming of subtropical air masses, potentially stimulating summertime melting of downwind European glaciers. Concurrently, increasing radiative heating due to maximum summer insolation, combined with rising atmospheric  $\text{CO}_2$  concentrations (33), could have dominated seasonal warming and glacier recession during the YDS.

Regarding the timing of the LLA, our chronology provides a firm minimum constraint for the event and shows deglaciation of Rannoch Moor—and thus Scotland—was complete by at least  $\sim 12,200$  y ago. Although this scenario is supported by earlier radiocarbon studies (14, 15, 21, 34), it is difficult to reconcile with the paradigm of the LLA being driven by YDS cooling, because that would require the accumulation and collapse of a major ice cap within as little as 400 y. Indeed, one recent

assessment places the onset of the YDS closer to 12.7 ka (9), further shortening the window of time available for a stadial-driven advance. Such rapid build-up and decay of the ice cap is inconsistent, however, with the abundance of geomorphic data indicating deglaciation was dominated by gradual active retreat rather than sudden stagnation (16, 17) and with recent modeled reconstructions of the ice cap's evolution forced by Greenland temperature data (20). Thus in the context of our chronology we suggest the LLA represents either (i) a relatively minor expansion during the earliest YDS of a preexisting ice mass or (ii) a glacial advance predating the YDS chronozone. The latter scenario is consistent with an earlier interpretation of the Scottish record suggesting an Allerød age for the LLA (34) and with the pre-YDS advance of outlet glaciers in western Norway toward their maximum late glacial positions (35).

Our interpretation of the Rannoch Moor data, involving the summer (winter) heating (cooling) effects of a shallow North Atlantic mixed layer, reconciles full stadial conditions in the North Atlantic with YDS deglaciation in Scotland. This scenario might also account for the absence of YDS-age moraines at several higher-latitude locations (12, 36–38) and for evidence of mild summer temperatures in southern Greenland (11). Crucially, our chronology challenges the traditional view of renewed glaciation in the Northern Hemisphere during the YDS, particularly in the circum-North Atlantic, and highlights our as yet incomplete understanding of abrupt climate change.

## Materials and Methods

**Macrofossils Used for  $^{14}\text{C}$  Measurements.** Radiocarbon analyses were performed primarily on plant material collected from basal sediments overlying glacial till with a 5-cm-diameter Livingstone corer. Basal sediments comprise finely laminated units of fine- and medium-grained sand and clay (Figs. S1–S3), occasionally separated by thin lenses of gyttja, and exhibit abrupt transitions into overlying organic-rich material. Overall concentrations of organics in the minerogenic material are low, reflecting the sparsely vegetated nature of recently deglaciated terrain, and increase with distance up-core. Macrofossils used in our analyses were dominated by terrestrial plant species such as *Rhacomitrium* sp., *Empetrum* sp., *Betula* sp., *Sphagnum* sp., *Pogonatum* sp., and *Vaccinium* sp. (Fig. S4 and Dataset S1). Additionally, species indicative of shallow aquatic environments include *Potamogeton* sp., *Chara* sp., and *Nitella* sp. One sample (OS-93723) consisted entirely of chitinous black beetle shell fragments. Sediments first were wet-sieved to remove the fine-grained fraction, then inspected under a microscope.

Macrofossils were extracted using tweezers and subsequently cleaned in deionized water in an ultrasonic bath to remove any fine-grained minerogenic residue that potentially could be a source of old carbon (39, 40). We note that contamination by dissolved old carbon (the hard-water effect) is unlikely to affect our samples due to the absence of carbonate lithologies in the surrounding area and our preferential selection of terrestrial species for radiocarbon analyses. Analyses were performed at the Keck–Carbon Cycle Accelerator Mass Spectrometry Laboratory, University of California, Irvine, and at National Ocean Sciences Accelerator Mass Spectrometry, Woods Hole Oceanographic Institute. Radiocarbon dates were calibrated to calendar years using OxCal v.4.2 (41, 42) and IntCal 09 (43).

- Severinghaus J, Sowers T, Brook EJ, Alley RB, Bender ML (1998) Timing of abrupt climate change at the end of the Younger Dryas interval from thermally fractionated gases in polar ice. *Nature* 391:141–146.
- Steffensen JP, et al. (2008) High-resolution Greenland ice core data show abrupt climate change happens in few years. *Science* 321(5889):680–684.
- Mangerud J, Larsen E, Longva O, Sønstegeard E (1979) Glacial history of western Norway, 15,000–10,000 BP. *Boreas* 8(2):179–187.
- Ballantyne CK (2012) Chronology of glaciation and deglaciation during the Loch Lomond (Younger Dryas) stadi in the Scottish Highlands: Implications of recalibrated  $^{10}\text{Be}$  exposure ages. *Boreas* 41(4):513–526.
- Larsen E, Eide F, Longva O, Mangerud J (1984) Allerød–Younger Dryas climate inferences from cirque glaciers and vegetation development in the Nordfjord area, western Norway. *Arct Alp Res* 16(2):137–160.
- Andersen BG, et al. (1995) Younger Dryas ice-marginal deposits in Norway. *Quat Int* 28:147–169.
- Ivy-Ochs S, Schlüchter C, Kubik PW, Denton GH (1999) Moraine exposure dates imply synchronous Younger Dryas glacier advances in the European Alps and in the southern Alps of New Zealand. *Geografiska Annaler* 81(2):313–323.
- McManus JF, Francois R, Gherardi J-M, Keigwin LD, Brown-Leger S (2004) Collapse and rapid resumption of Atlantic meridional circulation linked to deglacial climate changes. *Nature* 428(6985):834–837.
- Brauer A, Haug GH, Dulski P, Sigman DM, Negendank JFW (2008) An abrupt wind shift in western Europe at the onset of the Younger Dryas cold period. *Nat Geosci* 1:520–523.
- Denton GH, Alley RB, Comer GC, Broecker WS (2005) The role of seasonality in abrupt climate change. *Quat Sci Rev* 24:1159–1182.
- Björck S, et al. (2002) Anomalously mild Younger Dryas summer conditions in southern Greenland. *Geology* 30(5):427–430.
- Hall B, Baroni C, Denton G, Kelly M, Lowell T (2008) Relative sea-level change, Kjove Land, Scoresby Sund, East Greenland: Implications for seasonality in Younger Dryas time. *Quat Sci Rev* 27(25–26):2283–2291.
- Ampel L, et al. (2010) Modest summer temperature variability during DO cycles in western Europe. *Quat Sci Rev* 29(11–12):1322–1327.
- Lowe JJ, Walker MJC (1976) Radiocarbon-dates and deglaciation of Rannoch Moor, Scotland. *Nature* 264:632–633.
- Walker MJC, Lowe JJ (1977) Postglacial environmental history of Rannoch Moor, Scotland. I. Three pollen diagrams from the Kingshouse area. *J Biogeogr* 4(4):333–351.
- Bennett MR, Glasser NF (1991) The glacial landforms of Glen Geussachan, Cairngorms: A reinterpretation. *Scott Geogr Mag* 107(2):116–123.
- Bennett MR, Boulton GS (1993) Deglaciation of the Younger Dryas or Loch Lomond Stadial ice-field in the northern Highlands, Scotland. *Jour. Quat. Sci.* 8(2):133–145.
- Benn DI, Lowe JJ, Walker MJC (1992) Glacier response to climatic change during the Loch Lomond Stadial and early Flandrian: Geomorphological and palynological evidence from the Isle of Skye, Scotland. *Jour. Quat. Sci.* 7(2):125–144.
- MacLeod A, et al. (2011) Timing of glacier response to Younger Dryas climatic cooling in Scotland. *Global Planet Change* 79(3–4):264–274.
- Golledge NR, Hubbard A, Sugden DE (2008) High-resolution numerical simulation of Younger Dryas glaciation in Scotland. *Quat Sci Rev* 27(9–10):888–904.
- Walker MJC, Lowe JJ (1979) Postglacial environmental history of Rannoch Moor, Scotland. II. Pollen diagrams and radiocarbon dates from the Rannoch Station and Corrour areas. *J Biogeogr* 6(4):349–362.
- Strelin JA, Denton GH, Vandergoes MJ, Ninnemann US, Putnam AE (2011) Radiocarbon chronology of the late-glacial Puerto Bandera moraines, Southern Patagonian Icefield, Argentina. *Quat Sci Rev* 30(19–20):2551–2569.
- Grootes PM, Stuiver M (1997) Oxygen  $^{18}/^{16}$  variability in Greenland snow and ice with 103 to 105-year time resolution. *J Geophys Res* 102:26455–26470.
- Ballantyne CK (2002) The Loch Lomond Readvance on the Isle of Mull, Scotland: Glacier reconstruction and palaeoclimatic implications. *Jour. Quat. Sci.* 17(8):759–771.
- Benn DI, Lukas S (2006) Younger Dryas glacial landsystems in western Scotland: Possible modern analogues and palaeoclimatic implications. *Quat Sci Rev* 25(17–18):2390–2408.
- Bowen DQ (1992) The Pleistocene of north west Europe. *Science Progress Oxford* 76(300):209–223.
- Bard E, Rostek F, Turon J-L, Gendreau S (2000) Hydrological impact of Heinrich events in the subtropical northeast Atlantic. *Science* 289(5483):1321–1324.
- Hays JD, Morley JJ (2004) The Sea of Okhotsk: A window on the Ice Age Ocean. *Deep Sea Res Part I Oceanogr Res Pap* 51(4):593–618.
- Haug GH, et al. (2005) North Pacific seasonality and the glaciation of North America 2.7 million years ago. *Nature* 433(7028):821–825.
- Caulle C, et al. (2013) Sea-surface hydrographical conditions off South Faeroes and within the north-eastern North Atlantic through MIS 2: The response of dinocysts. *Jour. Quat. Sci.* 28(3):217–228.
- Cabedo-Sanz P, Belt ST, Knies J, Husum K (2012) Identification of contrasting seasonal sea ice conditions during the Younger Dryas. *Quat Sci Rev* 79:74–86.
- Naafs BDA, Hefter J, Grützner J, Stein R (2013) Warming of surface waters in the mid-latitude North Atlantic during Heinrich events. *Paleoceanography* 28(1):153–163.
- Monnin E, et al. (2001) Atmospheric CO<sub>2</sub> concentrations over the last glacial termination. *Science* 291(5501):112–114.
- Bowen DQ (1999) Only four major 100-ka glaciations during the Brunhes Chron? *Int J Earth Sci* 88(2):276–284.
- Lohne OS, Bondevik S, Mangerud J, Svendsen JI (2007) Sea-level fluctuations imply that the Younger Dryas ice-sheet expansion in western Norway commenced during the Allerød. *Quat Sci Rev* 26(17–18):2128–2151.
- Mangerud J, Landvik JY (2007) Younger Dryas cirque glaciers in western Spitsbergen: Smaller than during the Little Ice Age. *Boreas* 36(3):278–285.
- Kelly MA, et al. (2008) A  $^{10}\text{Be}$  chronology of late-glacial and Holocene mountain glaciation in the Scoresby Sund region, east Greenland: Implications for seasonality during late-glacial time. *Quat Sci Rev* 27(25–26):2273–2282.
- Briner JP, Davis PT, Miller GH (2009) Latest Pleistocene and Holocene glaciation of Baffin Island, Arctic Canada: Key patterns and chronologies. *Quat Sci Rev* 28(21–22):2075–2087.
- Lowe JJ, Walker MJC (1980) *Studies in the Late-glacial of North-west Europe*, eds Lowe JJ, Gray JM, Robinson JE (Pergamon, Oxford), pp 123–138.
- Sutherland DG (1980) *Studies in the Late-glacial of North-west Europe*, eds Lowe JJ, Gray JM, Robinson JE (Pergamon, Oxford), pp 139–150.
- Bronk Ramsey C (2009) Bayesian analysis of radiocarbon dates. *Radiocarbon* 51(1):337–360.
- Ward GK, Wilson SR (1978) Procedures for comparing and combining radiocarbon age-determinations—A critique. *Archaeometry* 20(1):19–31.
- Reimer PJ, et al. (2009) IntCal09 and Marine09 radiocarbon age calibration curves, 0–50,000 years cal B.P. *Radiocarbon* 51(4):1111–1150.